



GAT MONTHLY MEMBERSHIP PROGRESS REPORT

Results as of: 6/30/2021

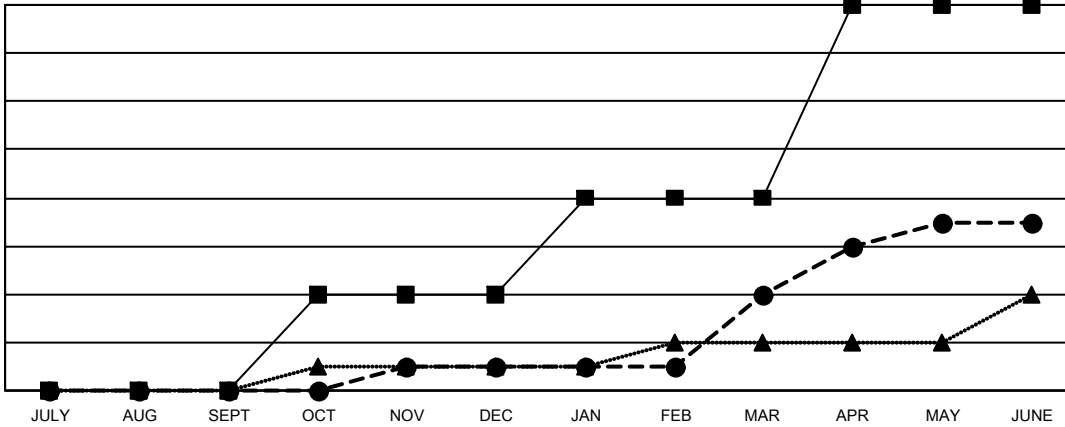
Multiple District 11

LOCATION: MICHIGAN

| Clubs | | | |
|-----------------------|---------------|-----------|---------------|
| RESULTS FOR 2020-2021 | | | |
| QUARTER | NEW CLUB GOAL | NEW CLUBS | DROPPED CLUBS |
| JULY/AUG/SEPT | 0 | 0 | 2 |
| OCT/NOV/DEC | 4 | 1 | 0 |
| JAN/FEB/MAR | 4 | 3 | 3 |
| APR/MAY/JUNE | 8 | 3 | 1 |

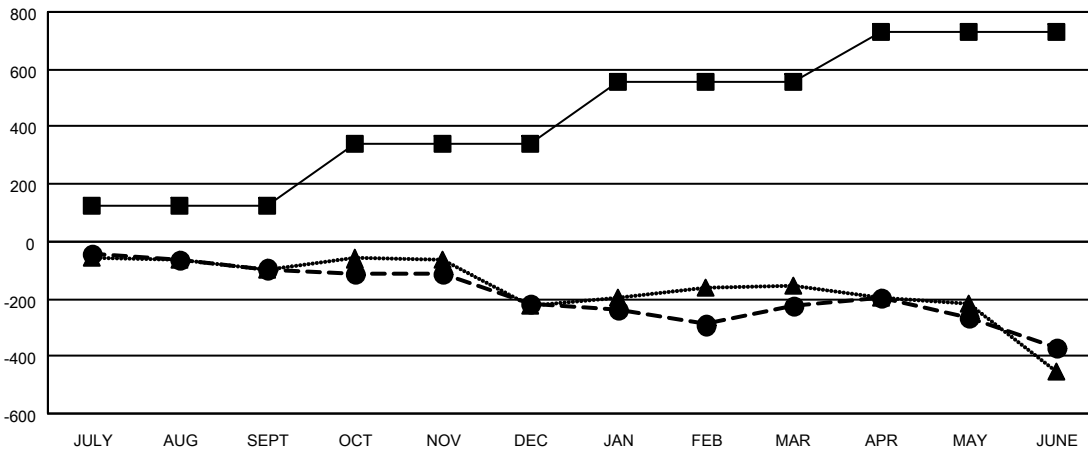
| Members | | | |
|-----------------------|------------------------|----------------------|--|
| RESULTS FOR 2020-2021 | | | |
| QUARTER | MEMBER GROWTH NET GOAL | MEMBER GROWTH ACTUAL | DROPPED MEMBERS ACTUAL (including transfers) |
| JULY/AUG/SEPT | 126 | 137 | 214 |
| OCT/NOV/DEC | 213 | 232 | 336 |
| JAN/FEB/MAR | 220 | 259 | 240 |
| APR/MAY/JUNE | 170 | 329 | 465 |

GOALS AND ACTUAL NEW CLUBS CUMULATIVE



- - CURRENT YEAR GOALS FOR NEW CLUBS
- - CURRENT YEAR ACTUAL NEW CLUBS
- ▲ - LAST YEAR ACTUAL NEW CLUBS

GOALS AND ACTUAL MEMBERS CUMULATIVE



- - MEMBER GROWTH NET GOAL
- - MEMBER GROWTH ACTUAL
- ▲ - LAST YEAR MEMBERSHIP ACTUAL

| | |
|------------------------|--------------|
| DROPPED CLUBS: 6 | |
| <u>DROPPED MEMBERS</u> | |
| DECEASED | 212 |
| CLUB CANCELLED | 67 |
| OTHER | 979 |
| TOTAL | 1,258 |

184 CLUBS OF 377 ADDED 1 OR MORE NEW MEMBERS

[CLICK HERE FOR CUMULATIVE MEMBERSHIP DATA](#)

| | |
|---------------------------------|----------------|
| <u>GENDER DISTRIBUTION</u> | |
| MALE | 6,313 (66.74%) |
| FEMALE | 3,146 (33.26%) |
| TOTAL FAMILY UNIT MEMBERS | 1,907 |
| FAMILY MEMBERS PAYING HALF DUES | 976 |